

Appendix C

Reevaluation



State of Utah

GARY R. HERBERT
Governor

GREG BELL
Lieutenant Governor

DEPARTMENT OF TRANSPORTATION

JOHN R. NJORD, P.E.
Executive Director

CARLOS M. BRACERAS, P.E.
Deputy Director

October 13, 2010

Mr. Edward T. Woolford
Federal Highway Administration
2520 West 4700 South, Ste. 9A
Salt Lake City, Utah 84118-1880

Subject: Reevaluation for Hyde Park to North Logan Transportation Corridor

Project Number: STP-1232(1)1; PIN 3520

Draft Environmental Impact Statement: March 2007

Dear Mr. Woolford:

The Federal Highway Administration, in accordance with the provisions of the National Environmental Policy Act (NEPA) and 23 CFR 771, completed a Draft Environmental Impact Statement (DEIS) in March 2007 for the Hyde Park to North Logan Transportation Corridor project. Preparation of the Final Environmental Impact Statement (EIS) continued until fall of 2009 when the project was put on hold.

More than three years have passed since the approval of the DEIS and in accordance with 23 CFR 771.129(a) and 23 CFR 771.130(a), a reevaluation has been prepared to determine whether a supplement to the DEIS or a new DEIS is needed.

Since the DEIS, a variation of Alternative 3 is being proposed by North Logan City to be included in the reevaluation and EIS. Alternative 3 Modified, as depicted on Figure 5.1-2 Build Alternatives, transitions off the 200 East alignment at approximately 2300 North and generally follows Alternative 3 along 100 East to 3700 North in Hyde Park. Reasoning for the inclusion of Alternative 3 Modified and associated impacts is described in Table 1: Reevaluation Summary.

Conditions in the project corridor have changed little since the DEIS was circulated in March 2007. Most of the area is undeveloped and remains planned for future growth. Several new developments have occurred within the study area, all of which are consistent with the planned development as presented in the DEIS.

A review of NEPA-related laws and regulations determined that regulatory changes have occurred since the DEIS, including the following:

- 2005 – The Safe, Accountable, Flexible, Efficient Transportation Equity Act – A Legacy for Users (SAFETEA-LU) amendment to Section 4(f) of the U.S. Department of Transportation Act of 1966 (49 USC Section 303) was updated to include *de minimis* use.
- 2008 – The Arid West Regional Supplement to the Army Corps of Engineers Wetland Delineation Manual was published.
- October 2009 – EPA designated Cache County as a non-attainment area for PM_{2.5}.
- January 2010 – UDOT updated their Noise Policy.

None of these new regulations or procedures have resulted in significant changes in environmental impacts from those presented in the DEIS.

Environmental studies conducted as part of the reevaluation identified minor changes to impacts since the DEIS, including the following:

- 2040 traffic forecasts are generally consistent with the 2025 forecasts as presented in the DEIS.
- New developments in the study area do not require relocations.
- Moderate increase in noise impacts for each of the build alternatives.
- New wetland was identified, resulting in less than 0.1 acre impact.

Table 1: Reevaluation Summary includes a description of the environmental studies conducted as part of the reevaluation. The table also documents the results of the reevaluation including the changes that have occurred since the DEIS. None of the changes in impacts are substantially different than those presented in the DEIS (see the Reevaluation Impacts figure attached).

Based on the studies and results contained within this reevaluation, UDOT concludes that the changes to the project will not result in additional significant impacts not already considered in the previously approved DEIS; therefore, a supplemental DEIS is not required. UDOT is seeking concurrence from FHWA on this decision.

Mr. Edward T. Woolford

October 13, 2010

Page 3 of 3

If you have any further questions, please contact Chris Lizotte, UDOT Region 1 Environmental Manager, at 801.620.1687 or Betsy Skinner, UDOT Complex Environmental Manager, at 801.965.4159.

Sincerely,



Brandon Weston

UDOT Director of Environmental Services

Attachments: Figure 5.1-2 Build Alternatives
Reevaluation Impacts Figure
Table 1: Reevaluation Summary

The Federal Highway Administration concurs with the Utah Department of Transportation's conclusion that the proposed changes to the Hyde Park to North Logan Transportation Corridor project described in this reevaluation would not result in significant environmental impacts not already evaluated in the Draft EIS. In addition, there is no new information or circumstances relevant to environmental concerns and bearings on the proposed action or its impacts that would result in significant environmental impacts not evaluated in the EIS. Therefore a supplemental EIS is not warranted.



Edward T. Woolford
Environmental Program Manager



Date

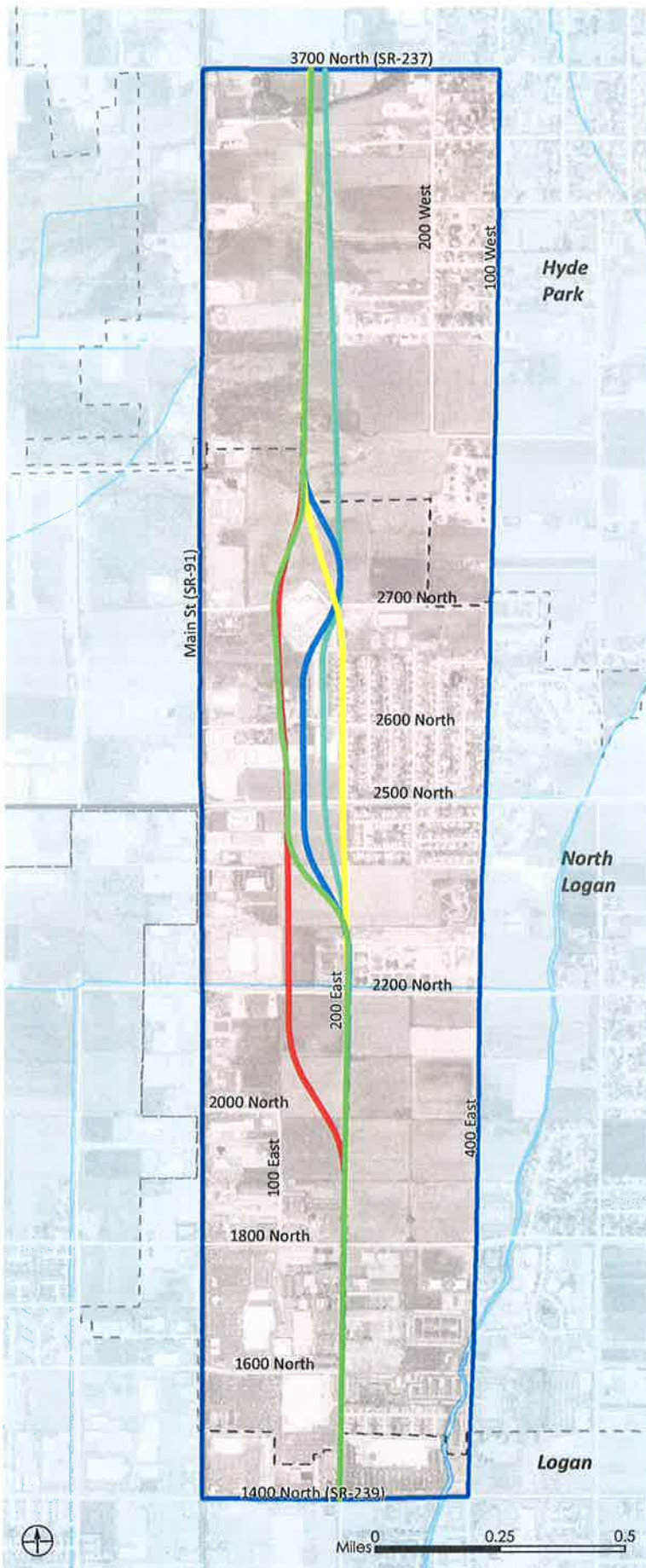
Subject: Reevaluation for Hyde Park to North Logan Transportation Corridor

Project Number: STP-1232(1)1; PIN 3520

Draft Environmental Impact Statement: March 2007

**HYDE PARK TO NORTH LOGAN
TRANSPORTATION CORRIDOR (200 EAST)**

Environmental Impact Statement



Alignment Alternatives

- 3
- 3 Modified
- 5
- 6A
- 6B
- Irrigation and Canals
- Study Area
- Municipal Boundaries



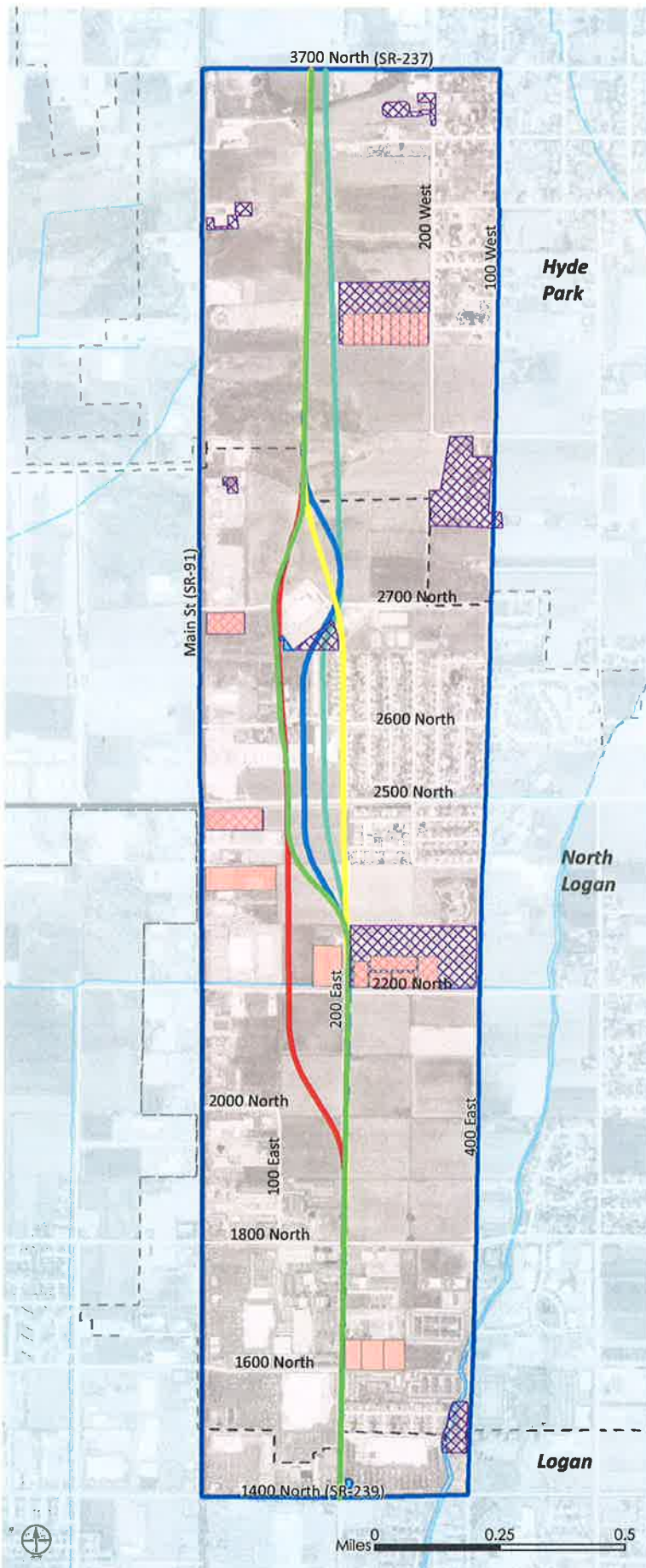
Project Location

**Figure 5.1-2
Build
Alternatives**

Thematic Data layers are from Utah AGRC and H.W. Lochner.

HYDE PARK TO NORTH LOGAN TRANSPORTATION CORRIDOR (200 EAST)

Environmental Impact Statement



- New Wetlands
 - New Impacted Noise Receptor Area
 - New Construction (developed as planned)
- Alignment Alternatives
- 3
 - 3 Modified
 - 5
 - 6A
 - 6B
 - Irrigation and Canals
 - Study Area
 - Municipal Boundaries



Project Location

Reevaluation Impacts

Thematic Data layers are from Utah AGRC, SWCA and H.W. Lochner.

Table 1: Reevaluation Summary

Chapter/Resource	Have Resources Changed?	Method of Review	Have Impacts Changed?	Description
Transportation				
Traffic Volumes	Yes			
Purpose and Need	No	<ul style="list-style-type: none"> - Traffic forecast updated to design year 2040 (model performed in 2005 for DEIS used 2025) - Traffic forecast performed using the 2009 Cache MPO model to reflect updated socioeconomic, as detailed in the Final Model Results Technical Memo dated July 2010 	<p>The updated 2040 model projects slightly lower traffic volumes for the southern portion of 200 East in comparison to the 2025 DEIS traffic projections.</p> <p>Additionally, 2040 projections are higher on SR-91 and the northern portion of 200 East.</p>	<p>The 2040 volumes are similar to the DEIS 2025 volumes with slight exceptions:</p> <ul style="list-style-type: none"> No-Build traffic volumes projected for SR-91 (parallel route) <ul style="list-style-type: none"> • DEIS volumes ranged from 30,000 – 43,000 • 2040 volumes ranged from 40,000 – 47,000 200 East traffic volumes under the Build Alternative(s): <ul style="list-style-type: none"> • DEIS volumes ranged from 4,800 – 18,000 • 2040 volumes ranged from 11,000 – 18,000 <p>Purpose and need remains unchanged. New traffic projections show congestion on SR-91. No continuous north-south facility exists in the study area, and projected traffic volumes are reduced on SR-91 under the Build Alternative(s).</p>
Travel Patterns	No	Comparison of DEIS to existing land use using 2009 aerial images and field review	No	<p>Since the time of the DEIS, North Logan City has constructed a two-lane section of 200 East from 1800 North to 2200 North. The newly constructed roadway consists of a travel lane and bike lane in each direction, a center median, and curb, gutter, and sidewalk on both sides. This new roadway includes a roundabout at 1800 North and 200 East.</p> <p>All of the build alternatives use this section of 200 East with the exception of Alternative 3, which deviates from this alignment at approximately 1950 North (see Figure 5.1-2).</p>

Table 1: Reevaluation Summary (cont'd)

Chapter/Resource Alternatives	Have Resources Changed?	Method of Review	Have Impacts Changed?	Description
Alternative 3 Modified	Yes	<ul style="list-style-type: none"> - Coordination with North Logan City - Preliminary engineering of Alternative 3 Modified 	Yes	<p>Alternative 3 Modified was not considered in the DEIS. A similar alignment, Alternative 4, was considered during alternative development in the DEIS but was eliminated during the second screening of alternatives because it so closely resembled Alternatives 3 and 5.</p> <p>North Logan City has requested that Alternative 3 Modified be considered as part of this reevaluation and EIS. This variation to Alternative 3, as shown on Figure 5.1-2, transitions off the 200 East alignment at approximately 2300 North and generally follows Alternative 3 along 100 East to 3700 North in Hyde Park. Overall impacts and performance of Alternative 3 Modified is similar to Alternative 3. Differences in impacts between Alternative 3 and Alternative 3 Modified have been noted in each applicable section of this reevaluation summary.</p> <p>Alternative 3 Modified is being included at the request of North Logan City for the following reasons:</p> <ul style="list-style-type: none"> • The alignment is consistent with development plans for adjacent parcels. • It provides alternative access to commercial properties fronted along SR-91/Main Street. • It avoids impacts to the residences along 200 East between 2500 North to 2700 North. • It avoids the Thomas Edison Charter School located at 2600 North 180 East. • It utilizes the new roadway improvements along 200 East from 1800 North to 2200 North. • It creates more viable development options of adjacent property than Alternative 3 because it does not result in as many "slivers" of property that are too small to develop.

Table 1: Reevaluation Summary (cont'd)

Chapter/Resource	Have Resources Changed?	Method of Review	Have Impacts Changed?	Description															
Land Use Existing Zoning	Yes	Review of current zoning from North Logan, Hyde Park, and Logan	No	<p>Zoning has been updated to be consistent with proposed development as shown in the DEIS (Figure 3.5-1) and to be consistent with requirements of the Land and Water Conservation Fund (LWCF) property. Generally, zoning has changed from agricultural to residential in Hyde Park and from commercial and residential to mixed-use in North Logan. The LWCF property was rezoned from agricultural to recreation.</p> <p>Zoning in the study area has changed as follows:</p> <table border="1"> <thead> <tr> <th>Zoning</th> <th>DEIS</th> <th>2010</th> </tr> </thead> <tbody> <tr> <td>Agricultural</td> <td>26%</td> <td>12%</td> </tr> <tr> <td>Commercial</td> <td>53%</td> <td>54%</td> </tr> <tr> <td>Residential</td> <td>21%</td> <td>25%</td> </tr> <tr> <td>Recreation</td> <td>0%</td> <td>9%</td> </tr> </tbody> </table> <p>These changes are consistent with the proposed development as presented in the DEIS.</p>	Zoning	DEIS	2010	Agricultural	26%	12%	Commercial	53%	54%	Residential	21%	25%	Recreation	0%	9%
Zoning	DEIS	2010																	
Agricultural	26%	12%																	
Commercial	53%	54%																	
Residential	21%	25%																	
Recreation	0%	9%																	

Table 1: Reevaluation Summary (cont'd)

Chapter/Resource	Have Resources Changed?	Method of Review	Have Impacts Changed?	Description
Land Use (cont'd)				
Planned Land Use	Yes	<ul style="list-style-type: none"> - Review of general plans for North Logan, Hyde Park, and Logan - Review of Community Development Project Area Plan (CDA) for North Logan - Coordination with cities and county 	No	<p>Plans for commercial and residential development as shown in the DEIS have not changed.</p> <p>Development plans for LWCF property have not changed. The area west of the future road corridor is to be converted for commercial development. The area east of the corridor is to be developed for recreation—plans for development remain conceptual (e.g., athletic fields for high school, soccer complex, or equestrian park).</p> <p>The CDA was approved in 2007 and revised in 2008 and is consistent with the intent of previous plans. The CDA is the guiding document for approximately 106 acres including the 40-acre North Logan Village Focal Area (2000 North, 400 East, 2200 North, and 200 East). The DEIS showed the proposed City Center site on a 40-acre parcel immediately south of what is shown in the CDA (1800 North, 400 East, 2500 North, and 200 East). None of the build alternatives would impact either 40-acre parcel. The CDA boundary overlaps with the area that was shown in the DEIS as the City Gateway redevelopment area on 2500 North between SR-91 and 200 East.</p>
Farmlands				
Farmland Designations within the Study Area	No	Consultation with Cache County Farm Service Agency Executive Director	No	There are no prime, unique, or statewide important farmlands in the study area.

Table 1: Reevaluation Summary (cont'd)

Chapter/Resource	Have Resources Changed?	Method of Review	Have Impacts Changed?	Description
Social Environment				
Residential Communities and Social Cohesion	Yes	<ul style="list-style-type: none"> - Comparison of 2006 aerial image with 2009 aerial image - Field review 	No	<p>New residential development has occurred adjacent to proposed alignments as follows:</p> <ul style="list-style-type: none"> • Towne Center Villas (senior community with 119 units located at 2200 North 400 East), which are adjacent to and east of Alternatives 5, 6A, and 6B. The development does not front 200 East (back units are adjacent, with no planned access onto 200 East). • Cedar Springs (single family home development with 18 homes located west of 200 West at approximately 350 South in Hyde Park). Vacant land abuts westernmost subdivision road where Alternative 6A is located.
Neighborhood Travel Patterns and Accessibility	No	Comparison of 2006 aerial image with 2009 aerial image	No	Accessibility to existing neighborhoods has not changed since the DEIS.
Public Facilities and Services	No	<ul style="list-style-type: none"> - Coordination with the city and county public service departments - School district information 	No	<p>No new public facilities have been constructed within the study area.</p> <p>Impacts to access and travel patterns for public services presented in the DEIS are still valid.</p>
Ethnic Minority and Low-income Populations	No	<ul style="list-style-type: none"> - Comparison of changes in land use - Census data 	No	No new Census Bureau data is available for the study area. Additionally, there are no new relocations or property impacts not already accounted for in the DEIS. Therefore, there are no new impacts to properties that may have an ethnic minority or low-income population.
Economic Conditions				
Economic Impacts	No	Comparison of existing and planned land use to DEIS	No	<p>Economic impacts described in the DEIS are still valid.</p> <p>Economic conditions for Alternative 3 Modified are similar to those presented in the DEIS for Alternative 3.</p>

Table 1: Reevaluation Summary (cont'd)

Chapter/Resource	Have Resources Changed?	Method of Review	Have Impacts Changed?	Description
Utilities				
Utilities	No	Review of 2009 general plans for North Logan, Hyde Park, and Logan	No	There are no new or planned utilities for the study area.
Pedestrian and Bicyclists				
Pedestrian and Bicyclists	Yes	Review of general plans and CMPO 2030 RTP; see the July 1 Land Use, Socioeconomic, and Hazardous Materials Technical Memo	No	Regional bikeways including signage have been designated on the following routes: 400 East, 2500 North, 2200 North, 200 East (south of 2200 North), 1800 North, and SR-239 since the publication of the DEIS.
Air Quality				
Air Quality Standards	Yes	Air analysis including review of EPA's MOBILE6.2; see Air and Noise Technical Report	No	<p>Mobile source air toxics (MSATs) were not evaluated in the DEIS. Based on FHWA's 2006 Interim Guidance on Air Toxic Analysis in NEPA Documents, the project is of a type that would have low potential for MSAT effects.</p> <p>An increase in VMT would lead to higher MSAT emissions for the preferred alternative along the highway corridor, along with a corresponding decrease in MSAT emissions along the parallel routes.</p> <p>On a regional basis, EPA's vehicle and fuel regulations, coupled with fleet turnover, will cause reductions over time. These reductions will, in almost all cases, cause region-wide MSATs to be significantly lower than they are today.</p>

Table 1: Reevaluation Summary (cont'd)

Chapter/Resource	Have Resources Changed?	Method of Review	Have Impacts Changed?	Description
Air Quality (cont'd)				
Air Quality Existing Conditions	Yes	<ul style="list-style-type: none"> - Review of regulations and guidance for Air Quality; see Air Quality Reevaluation Memorandum (June 2010) - Review of updated traffic model - Traffic volume screening according to Section C of the UDOT Air Quality Hot Spot Manual (May 2003) 	No	<p>EPA designated Cache County as a non-attainment area for PM_{2.5} in October 2009. Forecasted traffic volumes are not expected to increase carbon monoxide levels to the point of violating NAAQS. The project is not considered a project of air quality concern for particulate matter.</p> <p>Traffic volumes in the range of 45,000 or less are not expected to cause carbon monoxide levels to increase to the point of violating the NAAQS one-hour or eight-hour standards. This project's anticipated future volumes are 13,000 to 45,000 (less than the screening threshold).</p>
Noise				
Noise Policy	Yes	Review of current UDOT Noise Policy (January 20, 2010)	Yes – Impact criteria threshold increased, and cost-benefit criteria increased	<p>The UDOT Noise Policy changed since the DEIS. The DEIS used the 2004 policy, while the current policy is dated January 20, 2010.</p> <p>Noise impact criteria increased for all receptor types by 1 dBA. Cost-benefit per resident increased (from \$25,000 to \$30,000). Cost-benefit for other receptors also increased (from \$200 to \$250 per linear foot).</p>
Noise Model – Traffic	Yes	Updated noise model	Yes – minor changes were reported under the new traffic projections	Noise levels using updated 2040 traffic quantities were within 1 to 2 dBA of impacts reported in the DEIS for all alternatives.

Table 1: Reevaluation Summary (cont'd)

Chapter/Resource	Have Resources Changed?	Method of Review	Have Impacts Changed?	Description																		
Noise (cont'd)																						
Noise Receptors and Impacts	Yes	New receptors were identified using 2009 aerial imagery	Yes	<p>Noise receptors in the study area increased as follows:</p> <ul style="list-style-type: none"> Residential receptors increased from 447 to 537 Commercial receptors increased from 12 to 19 <p>Since the DEIS, impacts generally increased for each alternative with the exceptions listed below:</p> <table border="1"> <thead> <tr> <th>Alternative</th> <th>DEIS Impacts</th> <th>Reevaluation Impacts</th> </tr> </thead> <tbody> <tr> <td>Alt 3</td> <td>69</td> <td>70</td> </tr> <tr> <td>Alt 3M</td> <td>N/A</td> <td>76</td> </tr> <tr> <td>Alt 5</td> <td>127</td> <td>149</td> </tr> <tr> <td>Alt 6A</td> <td>88</td> <td>111</td> </tr> <tr> <td>Alt 6B</td> <td>75</td> <td>78</td> </tr> </tbody> </table>	Alternative	DEIS Impacts	Reevaluation Impacts	Alt 3	69	70	Alt 3M	N/A	76	Alt 5	127	149	Alt 6A	88	111	Alt 6B	75	78
Alternative	DEIS Impacts	Reevaluation Impacts																				
Alt 3	69	70																				
Alt 3M	N/A	76																				
Alt 5	127	149																				
Alt 6A	88	111																				
Alt 6B	75	78																				
Noise Barriers	Yes	Evaluation of mitigation using new cost-benefit criteria	Yes	<p>The total number of walls that meet reasonable and feasible criteria decreased from 7 in the DEIS to 6.</p> <ul style="list-style-type: none"> Three walls considered feasible and reasonable in the DEIS no longer meet reasonable and feasible criteria. Two walls not considered in the DEIS now meet reasonable and feasible criteria. 																		
Water Quality																						
Water Quality of Surface Conveyances	No	Comparison of existing conditions to DEIS	No	<p>The Utah Division of Water Quality (DWQ) does not assess any water bodies within the study area. Therefore, no water quality monitoring/assessment data is available in the DEIS for comparison. The DEIS discusses water quality qualitatively. Water quality impacts would result from an increase in impervious surfaces. The proposed cross section has not changed since the DEIS; therefore, water quality impacts have not changed. A additional storm water runoff is planned to discharge to irrigation ditches as stated in the DEIS.</p>																		

Table 1: Reevaluation Summary (cont'd)

Chapter/Resource	Have Resources Changed?	Method of Review	Have Impacts Changed?	Description																		
Water Quality (cont'd)																						
Storm Water Management	No	Coordination with the cities and county	No	No changes have been made to storm water management plans. Discharge to irrigation ditches/canals is to be negotiated. Storm water discharge for new 200 East construction between 1800 North and 2200 North has already been negotiated.																		
Groundwater Quality	No	Review of 2010 public drinking water sources and source protection GIS data	No	There are no new public drinking water wells or drinking water source protection zones in the study area. Alternative 3 Modified would not impact sensitive drinking water source protection zones (Zones 1 or 2).																		
Water Rights	Yes	Review of 2010 point of diversion GIS data from the Utah Division of Water Rights	Yes - See Water and Farmland Technical Memo (August 5, 2010)	There are additional impacts to private wells since the DEIS. Impacts to surface diversions have not changed.																		
<table border="1"> <thead> <tr> <th>Alternative</th> <th>DEIS Impacts</th> <th>Reevaluation Impacts</th> </tr> </thead> <tbody> <tr> <td>Alt 3</td> <td>1 surface, 2 wells</td> <td>1 surface, 4 wells</td> </tr> <tr> <td>Alt 3M</td> <td>N/A</td> <td>1 surface, 4 wells</td> </tr> <tr> <td>Alt 5</td> <td>1 surface, 2 wells</td> <td>1 surface, 2 wells</td> </tr> <tr> <td>Alt 6A</td> <td>1 well</td> <td>1 well</td> </tr> <tr> <td>Alt 6B</td> <td>1 surface, 3 wells</td> <td>1 surface, 3 wells</td> </tr> </tbody> </table>					Alternative	DEIS Impacts	Reevaluation Impacts	Alt 3	1 surface, 2 wells	1 surface, 4 wells	Alt 3M	N/A	1 surface, 4 wells	Alt 5	1 surface, 2 wells	1 surface, 2 wells	Alt 6A	1 well	1 well	Alt 6B	1 surface, 3 wells	1 surface, 3 wells
Alternative	DEIS Impacts	Reevaluation Impacts																				
Alt 3	1 surface, 2 wells	1 surface, 4 wells																				
Alt 3M	N/A	1 surface, 4 wells																				
Alt 5	1 surface, 2 wells	1 surface, 2 wells																				
Alt 6A	1 well	1 well																				
Alt 6B	1 surface, 3 wells	1 surface, 3 wells																				
Wetlands and Waters of U.S.																						
Statutory Requirements	Yes	Fieldwork using protocols outlined in USA CE Arid West Regional Supplement	Yes - See Wetland and Wildlife Technical Memo (August 23, 2010)	The 2004 DEIS delineation was conducted using the 1987 Wetland Delineation Manual. The wetland delineation will be updated for the EIS in accordance with the Arid West Regional Supplement. The Arid West Regional Supplement may influence (decrease) the boundaries of Wetlands C and D.																		

Table 1: Reevaluation Summary (cont'd)

Chapter/Resource	Have Resources Changed?	Method of Review	Have Impacts Changed?	Description
Wetlands and Waters of U.S. (cont'd)				
Delineated Wetlands and Water Bodies	Yes	Field review	Yes	Wetlands A and B have not changed. Wetlands C and D have not changed substantially, but may have decreased in size. Additional fieldwork is recommended prior to determining mitigation for the preferred alternative. A small wetland (0.18 acre) west of the Eccles Ice Arena was identified during the field review. This wetland was not included in the DEIS. This new wetland would be impacted as follows: <ul style="list-style-type: none"> • Alternative 3 – 0.03 acre • Alternative 3 Modified – 0.003 acre
Wetland Functions	No		No	No changes in wetland functions.
Wildlife and Sensitive Species				
Wildlife	Yes	- GIS analysis of land use data - Field review	Yes	Acreage of potential habitat (for small mammals—primarily rodents—in undeveloped/agricultural land) has decreased by 13% (655 acres reduced to 570 acres).
Fisheries	No	Field review	No	No fisheries are present in the study area.
Migratory Bird Treaty Act	Yes	Field review	No	Three magpie nests identified. No raptor nests present. Magpie nests can be removed during non-nesting season.
State Sensitive Species	No	- Obtain updated list of state sensitive species in Cache County - Discussions with Division of Wildlife Resources - Field review	No	Three species have been added to the state sensitive species list for Cache County: <ul style="list-style-type: none"> • Bald eagle (removed from federal list)—no nests identified in the study area • California floater—no populations identified; potential habitat identified within study area • Great Plains toad—no populations or suitable habitat identified No populations of any newly added species were found within the study area. Whooping crane was removed from the state sensitive species list and added to the federal list (extirpated in Utah).

Table 1: Reevaluation Summary (cont'd)

Chapter/Resource	Have Resources Changed?	Method of Review	Have Impacts Changed?	Description
Threatened and Endangered Species				
Federally Listed Species	Yes	<ul style="list-style-type: none"> - Obtain updated list of T&E species by county - Discussions with DWR - Field review 	No; See Wetland and Wildlife Technical Memo (August 23, 2010)	Ute ladies'-tresses were added to the federally protected species list with potential habitat in Cache County. No individuals or populations were found during the field survey.
Cultural Resources				
Eligible Historic Properties	No	<ul style="list-style-type: none"> - Review of cultural resource inventory (Sagebrush) - Field review 	No	<p>No new cultural resources were identified within the APE. No evidence that reconsideration of previous eligibility determination is warranted.</p> <p>Alternative 3 Modified would impact the Cache Meadow Dairy located at 19 East 2600 North. This impact would require the removal of four buildings associated with the dairy; see the revised Section 4(f) Evaluation for further discussion on the use of this historic property.</p> <p>No changes in impacts.</p>
Archaeology/Paleontology	No	Review of cultural resource inventory (Sagebrush)	No	
Hazardous Waste				
Regulated Facilities	Yes	Review of federal and state databases for known CERCLA, NPL, UST/LUST, RCRA, TRI, and VCP sites	No	One newly listed active LUST site is located within the study area—Chrysler Dodge Country USA, Inc. (2900 North Main, Logan). It is not impacted by the alternatives.
Wild and Scenic Rivers				
Wild and Scenic Rivers	No	Review of wild and scenic river suitable list	No	There are no wild and scenic rivers in the study area.

Table 1: Reevaluation Summary (cont'd)

Chapter/Resource	Have Resources Changed?	Method of Review	Have Impacts Changed?	Description
Right-of-Way and Relocations				
Partial Takes	Yes	GIS analysis using final alignment and current parcel data	Yes	The parking lot for the George S. Eccles Ice Center has been expanded since the DEIS. New impacts to the ice center and parking lot expansion are as follows: <ul style="list-style-type: none"> Alternative 6A: 0.99 acre, 125 stalls, 1 light pole Alternative 6B: 1.2 acre, 223 stalls, 1 light pole In general, large parcels of land have been subdivided since the DEIS. This has resulted in an increase in properties impacted by all the alternatives; however, the total acreage of impacts has not changed.
Relocations	No	Review of DEIS	No	No new relocations.
Energy	No	Compared existing conditions to DEIS	No	No changes in impacts.
Construction Impacts				
Water Quality and Wetlands		- Review of existing conditions	No	No changes in impacts.
Vehicle, Pedestrian, and Bicycle Traffic		- Preliminary FEIS		
Air Quality				
Noise				
Vegetation				
Utilities				
Hazardous Materials				
Cultural Resources				
Water Quality and Wetlands				

Table 1: Reevaluation Summary (cont'd)

Chapter/Resource	Have Resources Changed?	Method of Review	Have Impacts Changed?	Description
Cumulative Impacts				
Socioeconomic		- Review of existing conditions	No	No changes in impacts.
Air Quality		- Preliminary FEIS		
Water Quality/Water Rights				
Wetlands/Water Bodies				
Historic and Archaeological				
Section 4(f) Evaluation				
Amendment to Section 4(f) (49 USC Section 303) for de minimis impacts	Yes	<ul style="list-style-type: none"> - Section 4(f) regulation as amended in SAFETEA-LU - Field review - Data search - Coordination with localities and environmental review agencies 	Yes: See attached Section 4(f) Evaluation	<p>Since the DEIS, the 2005 Safe, Accountable, Flexible, Efficient Transportation Equity Act – A Legacy for Users (SAFETEA-LU) amendment to Section 4(f) of the U.S. Department of Transportation (USDOT) Act of 1966 (49 USC Section 303) allows USDOT to determine that certain uses of Section 4(f) land are <i>de minimis</i> and will have no adverse effect on the protected resource.</p> <p>No new Section 4(f) resources were identified in the study area. North Logan City is in the process of revising their Park and Trails Master Plan, which includes seven planned trails in the study area. These trails are described as multi-use paths (either paved or gravel) and would be designed for recreational purposes. Currently, the Park and Trails Master Plan has not been finalized or formally adopted. Therefore, the planned trails within the study area are not currently protected under Section 4(f).</p>

Table 1: Reevaluation Summary (cont'd)

Chapter/Resource	Have Resources Changed?	Method of Review	Have Impacts Changed?	Description																		
Section 4(f) Evaluation (cont'd)																						
				Changes in use since the DEIS are described below:																		
				<table border="1"> <thead> <tr> <th>Alternative</th> <th>DEIS</th> <th>Reevaluation</th> </tr> </thead> <tbody> <tr> <td>Alt 3</td> <td>3 Section 4(f) uses</td> <td>1 Section 4(f) use; 2 Section 4(f) de minimis impacts</td> </tr> <tr> <td>Alt 5</td> <td>2 Section 4(f) uses</td> <td>2 Section 4(f) de minimis impacts</td> </tr> <tr> <td>Alt 6A</td> <td>2 Section 4(f) uses</td> <td>2 Section 4(f) de minimis impacts</td> </tr> <tr> <td>Alt 6B</td> <td>3 Section 4(f) uses</td> <td>1 Section 4(f) use; 2 Section 4(f) de minimis impacts</td> </tr> <tr> <td>Alt 3 Modified</td> <td>N/A</td> <td>1 Section 4(f) use; 1 Section 4(f) de minimis impact</td> </tr> </tbody> </table>	Alternative	DEIS	Reevaluation	Alt 3	3 Section 4(f) uses	1 Section 4(f) use; 2 Section 4(f) de minimis impacts	Alt 5	2 Section 4(f) uses	2 Section 4(f) de minimis impacts	Alt 6A	2 Section 4(f) uses	2 Section 4(f) de minimis impacts	Alt 6B	3 Section 4(f) uses	1 Section 4(f) use; 2 Section 4(f) de minimis impacts	Alt 3 Modified	N/A	1 Section 4(f) use; 1 Section 4(f) de minimis impact
Alternative	DEIS	Reevaluation																				
Alt 3	3 Section 4(f) uses	1 Section 4(f) use; 2 Section 4(f) de minimis impacts																				
Alt 5	2 Section 4(f) uses	2 Section 4(f) de minimis impacts																				
Alt 6A	2 Section 4(f) uses	2 Section 4(f) de minimis impacts																				
Alt 6B	3 Section 4(f) uses	1 Section 4(f) use; 2 Section 4(f) de minimis impacts																				
Alt 3 Modified	N/A	1 Section 4(f) use; 1 Section 4(f) de minimis impact																				
Permits																						
UPDES General Construction Permit	No		No	UPDES is still required.																		
Section 401 Water Quality Certification	No		No	Section 401 certification is included in the Section 404 process.																		
CWA Section 404 Permit	Yes		Yes	Impacts for all alternatives are more than 0.1 acre; CWA Section 404 Permit is still required.																		
Compliance with State Water Rights Law and UDWR rules/regulations (Water Rights)	Yes		No	No changes to State Water Rights Law and UDWR rules/regulations (Water Rights).																		
Stream Alteration Permit	No		No	Stream alteration permit is still required.																		

Table 1: Reevaluation Summary (cont'd)

Chapter/Resource	Have Resources Changed?	Method of Review	Have Impacts Changed?	Description
Permits (cont'd)				
Compliance with SHPO Historic Documentation	No		No	No change
Compliance with URAA and RPAPA (Relocations)	No		No	No change
Compliance with Section 6(f) of LWCF Act, UBOR	No		No	6(f) property has not changed. Compliance with 6(f) is still required.