

TECHNICAL MEMORANDUM

Cache Valley Corridor

Project Committee Structure

Document No. 1-PA-110-DO
Project No. SP-LC05(1)

Prepared For:



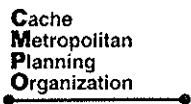
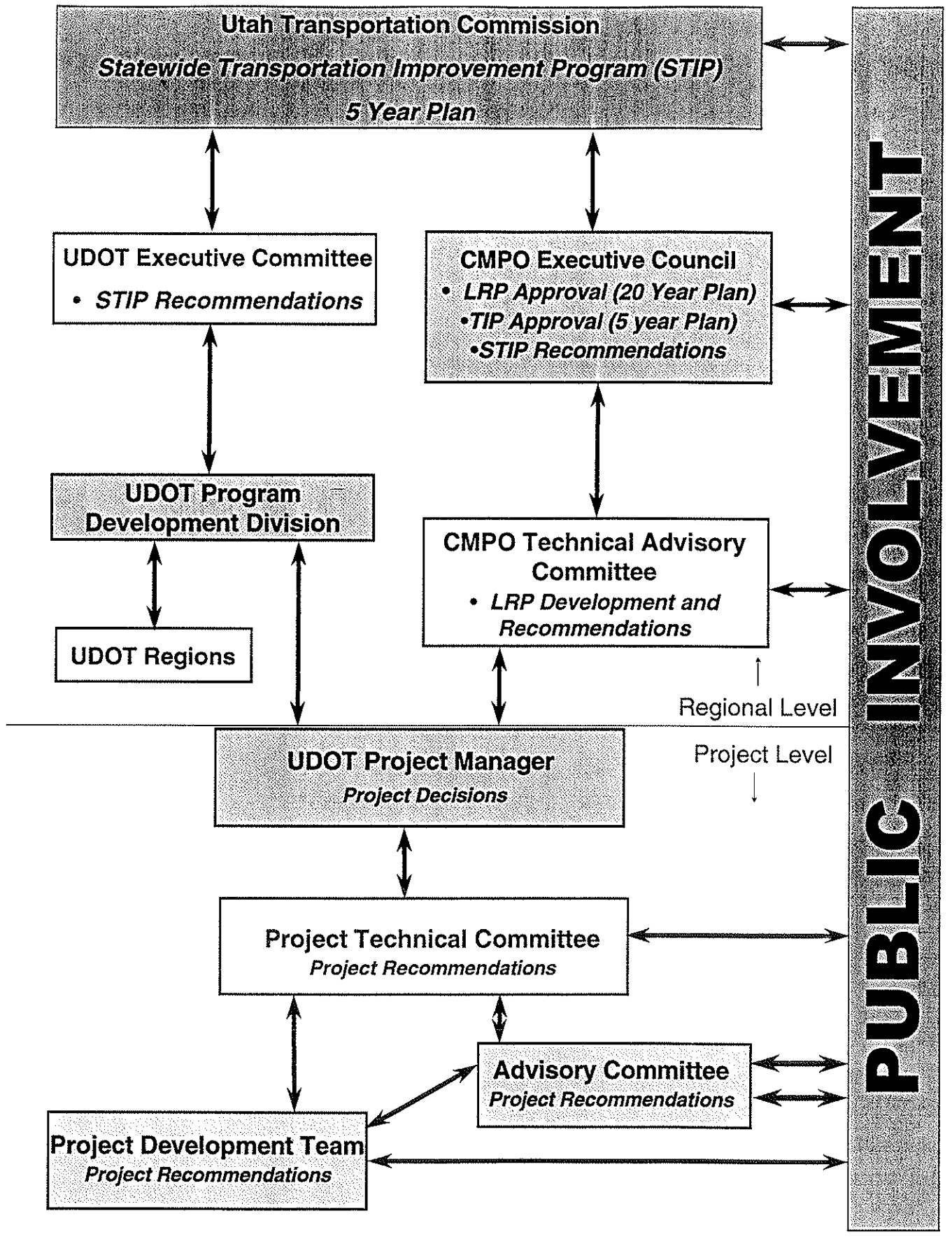
UTAH DEPARTMENT OF TRANSPORTATION

June 1998

Prepared and Submitted By:

MK CENTENNIAL

CENTENNIAL ENGINEERING, INC.



PROJECT COMMITTEE STRUCTURE

Project Development Team (Consultants to UDOT and CMPO)

Responsible for: Project development, technical analysis, public involvement, and project recommendations.

Project recommendations made to: Project Technical Committee

Advisory Committee

Responsible for: Communication liaison between community and project development team. Makes project recommendations based on stakeholder input regarding project issues.

Project recommendations made to: Project Technical Committee

Project Technical Committee

Responsible for: Project development oversight and project decision recommendations.

UDOT Project Manager

Responsible for: Project management, project decision making, and regional program recommendations.

Regional program recommendations made to: UDOT Program Development Division
CMPO Technical Advisory Committee

CMPO Technical Advisory Committee

Responsible for: Cache Metropolitan Planning Organization Long Range Transportation Plan (LRP) development and LRP recommendations. Regional Transportation Improvement Program (TIP) development and recommendations

Regional program recommendations made to: CMPO Executive Council

CMPO Executive Council

Responsible for: Cache Metropolitan Planning Organization Long Range Transportation Plan (LRP) approval. Regional Transportation Improvement Program (TIP) approval. Statewide Transportation Improvement Plan (STIP) recommendations

STIP recommendations to: Utah Transportation Commission

UDOT Program Development Division

Responsible for: UDOT 5-year Statewide Transportation Improvement Program (STIP) development and STIP recommendations.

STIP recommendations made to: UDOT Executive Committee

UDOT Executive Committee

Responsible for: UDOT Administration and Statewide Transportation Improvement Program (STIP) recommendations

STIP recommendations made to: Utah Transportation Commission

Utah Transportation Commission

Responsible for: Statewide Transportation Improvement Program (STIP) approval. Works cooperatively with CMPO Executive Council to develop and modify TIP.

COMMITTEE MEMBERSHIP LISTS

Project Development Team

Skip Hudson, MK Centennial
Ron Holmes, Wilbur Smith Associates
Jose Farran, Wilbur Smith Associates
Lorraine Richards, Entranco
Mark Raming, SWCA
Wayne Crow, Knighton & Crow

Advisory Committee

See Attached Mailing list.

Project Technical Committee

Voting

Walt Steinvorth, UDOT Program Development
Rod Terry, UDOT Region One
Jim Gass, Cache MPO
Tom Fisher, Cache MPO
Rod Blossom, City of Logan
Geoff Straw, Logan Transit District
Mark Teuscher, Countywide Planning and Development Office

Ex-officio

Mike Schwinn, ACOE
Harlan Miller, FHWA Utah Division
Don Cover, FTA

UDOT Project Manager

Walt Steinvorth, UDOT Program Development

CMPO Technical Advisory Committee

Joseph Campbell, Providence
Rod Blossom, Logan
Bob Christensen, Hyde Park
Dave Rhodes, River Heights
Lowell Elmer, UDOT Transit
Jim Gass, Smithfield
Lorene Greenhalgh, Cache County
Jay Harrison, Nibley
Jeff Jorgensen, North Logan City
Harlan Miller, FHWA
John Njord, UDOT Planning
Vince Saunders, Nibley
Walt Steinvorth, UDOT Planning
Geoff Straw, Logan Transit District
Rod Terry, UDOT Region 1
Mark Teuscher, Cache County Planning
Richard Zollinger, Millville

CMPO Executive Council

Steve Bodily, Utah Transportation Commission
Mark Daines, Hyde Park City
Ralph Degn, River Heights
Jack Draxler, North Logan City
Gale Hall, Millville City
Lynn Lemon, Cache County
Alma Leonhardt, Providence City
Jay Nelson, Nibley City
Jan Pearce, Logan City
Sara Ann Skanchy, Cache County
Geoff Straw, Logan Transit District
Doug Thompson, Logan City
Kent Ward, Smithfield City
Jim Gass, Executive Director

CACHE VALLEY CORRIDOR
ADVISORY COMMITTEE
As of 4-10-93

Tom Proffitt
345 E 200 S
Logan, UT 84321

Cache County
Lynn Lemon, County Executive
120 North 100 West
Logan, UT 84321

Cache Metropolitan Planning Organization
Jim Gass, Executive Director
c/o Smithfield City, 69 N Main
P O Box 96
Smithfield, UT 84335

Cache Metropolitan Planning Organization
Tom Fisher, Transportation Planner
160 N Main
Logan, UT 84321

Chamber of Commerce
Vern Bray
1367 E 1980 N
N Logan, UT 84341

City of Logan
Rod Blossom, Public Works Director
5 N Main
Logan, UT 84321

City of Logan
Doug Thompson, Mayor
255 N Main
Logan, UT 84321

City of Logan, Logan Transit District
Geoff Straw, Transit Manager
255 N Main
Logan, UT 84321

Comm. and Economic Dev., Community Development
Dick Bradford
324 South State Street, Suite 500
Salt Lake City, UT 84114

Comm. and Economic Dev., Indian Affairs
Forest Cuch, Director
324 South State Street, Suite 500
Salt Lake City, UT 84114

Comm. and Economic Dev., State History
Barbara Murphy, Cultural Resource Coordinator
300 S Rio Grande
Salt Lake City, UT 84101

Comm. and Economic Dev., State History
James Dykman, Cultural Resource Coordinator
300 S Rio Grande
Salt Lake City, UT 84101

Department of Agriculture
Cary Peterson, Commissioner
350 No. Redwood Rd., Box 146500
Salt Lake City, UT 84114-6500

Department of Transportation
Walt Steinvorth, Project Manager
4501 South 2700 West, Box 143600
Salt Lake City, UT 84114-3600

Department of Transportation
Tim Buntrock, Environmental Engr.
Region 1, 169 No. Wall Ave.
P.O. Box 12580
Ogden, UT 84412

Department of Transportation
Rod Terry, Preconstruction Engineer
Region 1, 169 No. Wall Ave.
P.O. Box 12580
Ogden, UT 84412

Env. Quality, Air Quality
Ursula Truman, Director
150 North 1950 West
Salt Lake City, UT 84114-4820

Env. Quality, Env. Response and Remediation
Michael Zucker
168 North 1950 West, Box 144840
Salt Lake City, UT 84114-4840

Env. Quality, Water Quality
Don Ostler, Director
288 North 1460 West, Box 144870
Salt Lake City, UT 84114-4870

Farm Bureau
Lane Parker
231 Harvest Road
Providence, UT 84332

Federal Transit Authority
Don Cover, Regional Planner
216 16th St, Suite 650
Denver, CO 80202

Natural Resource Conservation Service
Bob Sennett
P O Box 11350
Salt Lake City, UT 84147

Natural Resource Conservation Service
Bill Broderson
P O Box 11350
Salt Lake City, UT 84147

Natural Resources, Forestry, Fire and State Lands
Arthur DuFalt, Director
1594 W North Temple, Suite 3520, Box 145703
Salt Lake City, UT 84114-5703

Natural Resources, Parks and Recreation
Courtland Nelson, Director
1594 W North Temple, Box 146001
Salt Lake City, UT 84114-6001

Natural Resources, Water Resources
Ken Short, Senior Engr.
1594 W North Temple, Box 146201
Salt Lake City, UT 84114-6201

Natural Resources, Water Rights
Robert Morgan, Director
1594 W North Temple, Suite 2200, Box 146300
Salt Lake City, UT 84114-6300

Natural Resources, Wildlife Resources
Larry Dalton, Terrestrial Coordinator
1594 W North Temple, Suite 2110, Box 146301
Salt Lake City, UT 84114-6301

Office of Planning and Budget
Nancy Keate, Wetland Coordinator
116 State Capitol Bldg.
Salt Lake City, UT 84114

Providence
Alma Leonhardt, Mayor
42 S 200 E
Providence, UT 84332

Public Safety, Comp. Emergency. Mgmt.
Judy Watanabe, State Flood Plain Mgr.
1110 State Office Bldg.
Salt Lake City, UT 84114

School and Institutional Trust Lands
Kevin Carter
675 E 500 S, Suite 500
Salt Lake City, UT 84102

Smithfield
Kent Ward, Mayor
124 S 100 E
Smithfield, UT 84335

US Housing and Urban Development
Brent Tucker
17 E 200 S, Suite 550
Salt Lake City, UT 84111

US Army Corp. of Engineers
Mike Schwinn, Utah Chief
1403 South 600 West, Suite A
Bountiful, UT 84010

US Environmental Protection Agency, Region VIII
Mike Hammer, Coordinator
999 18th Street, Suite 500; Code 8EPR-EP
Denver, CO 80202-2466

US Federal Highway Administration, Utah Division
Harlan Miller, Transportation Planner
2520 West 4700 South, Suite 9-A
Salt Lake City, UT 84118

US Fish and Wildlife Service
Reed Harris
145 East 1300 South, Suite 404
Salt Lake City, UT 84115

Utah State University
Jay Nielson, Asst. Director
USU Campus Planning and Engineering
Logan, UT 84322-8400

CC:
Advisory Council on Historic Preservation
MaryAnn Naber
1100 Pennsylvania Ave., NW #803
Washington, DC 20004

Comm. and Economic Dev., Indian Affairs
Perry Mathews, Asst Director
324 South State Street, Suite 500
Salt Lake City, UT 84114

Countywide Planning and Development
Mark Teuscher, Countywide Planner
160 North Main, Suite 203
Logan, UT 84321

Entranco, Inc
Lorraine Richards, Environmental Planner
1600 West 2200 South, Suite 103
Salt Lake City, UT 84119

Env. Quality, Air Quality
Rachel Parkhurst-Miller, Environmental Engr.
150 North 1950 West
Salt Lake City, UT 84114-4820

Env. Quality, Env. Response and Remediation
Ken Gray, Director
168 North 1950 West, Box 144840
Salt Lake City, UT 84114-4840

Federal Emergency Management Agency
John Liou
Region 8, Denver Fed. Cntr., Bldg. 710; Box 25267
Denver, CO 80225-0267

MK Centennial
Skip Hudson, Project Manager
310 East 4500 South, Suite 200
Salt Lake City, UT 84107

Natural Resource Conservation Service
Karl Kler, District Conservationist
1860 N 100 E
Logan, UT 84341-2215

Natural Resources, Forestry, Fire and State Lands
Karl Kappe
1594 W North Temple, Suite 3520, Box 145703
Salt Lake City, UT 84414-5703

Natural Resources, Parks and Recreation
Lyle Bennett, Grants Coordinator
1594 W North Temple, Suite 116
Salt Lake City, UT 84116

Natural Resources, Water Resources
Dennis Strong, Assistant Director
1594 W North Temple, Suite 310, Box 146201
Salt Lake City, UT 84114-6201

Natural Resources, Water Rights
Jim Wells
1594 W North Temple, Suite 2200, Box 146300
Salt Lake City, UT 84114-6300

Natural Resources, Water Rights
Daren Rasmussen, Hydrogeology
1594 W North Temple, Suite 2200, Box 146300
Salt Lake City, UT 84114-6300

Natural Resources, Water Rights
Will Atkin, Asst. Regional Engr.
1780 N Research Parkway, Suite 104
No Logan, UT 84341

Natural Resources, Wildlife Resources
Pam Kramer, Reg. Habitat Spec.
515 East 5300 South
Ogden, UT 84405

Natural Resources, Wildlife Resources
John Goede, Fisheries Experiment Station
1465 West 200 North
Logan, UT 84321

Office of Planning and Budget (RDCC)
Brad Barber, Deputy Director
116 State Capitol Bldg.
Salt Lake City, UT 84114

SWCA
Mark Raming
56 West 400 South, Suite 201
Salt Lake City, UT 84101

US Army Corp. of Engineers
Brooks Carter, Section Chief
1403 South 600 West, Suite A
Bountiful, UT 84010

US Army Corp. of Engineers
Anthony Vigil
1403 South 600 West, Suite A
Bountiful, UT 84010

US Dept. of Interior
Willie R. Taylor,
Office of Env. Policy, Office of the Secretary
Washington, DC 20240

US Fish and Wildlife Service
Robert Freeman
145 East 1300 South, Suite 404
Salt Lake City, UT 84115

US Fish and Wildlife Service
Laura Romin, Wildlife Ecologist
145 East 1300 South, Suite 404
Salt Lake City, UT 84115

Wilbur Smith Associates
Ron Holmes, Trans. Planning Mgr.
8 East Broadway, Suite 350
Salt Lake City, UT 84111-2227

Wilbur Smith Associates
Jose Farran, Principal Modeler
221 Main Street, Suite 1200
San Francisco, CA 94105-1915